

C390V




SEALINE

DISCOVER THE FREEDOM

SEALINE C390v



SEALINE C390v



VERVE, VOLUME, VERSATILITY: THE V-SERIES

TEAK PLATFORM ON EACH SIDE

Two bathing platforms have been placed around the outboards to ensure everyone goes in and out the water easily.

FUN-TO-DRIVE OUTBOARDS

Driving the C390v is spontaneous and entertaining. And with quieter outboards, life on board is sure to be a pleasure.

THREE CABINS ACROSS 40FT

Three double cabins and two bathrooms offer elegant living like no other – and give each person on board their own favourite spot.

SUPERB SEATING ARRANGEMENTS

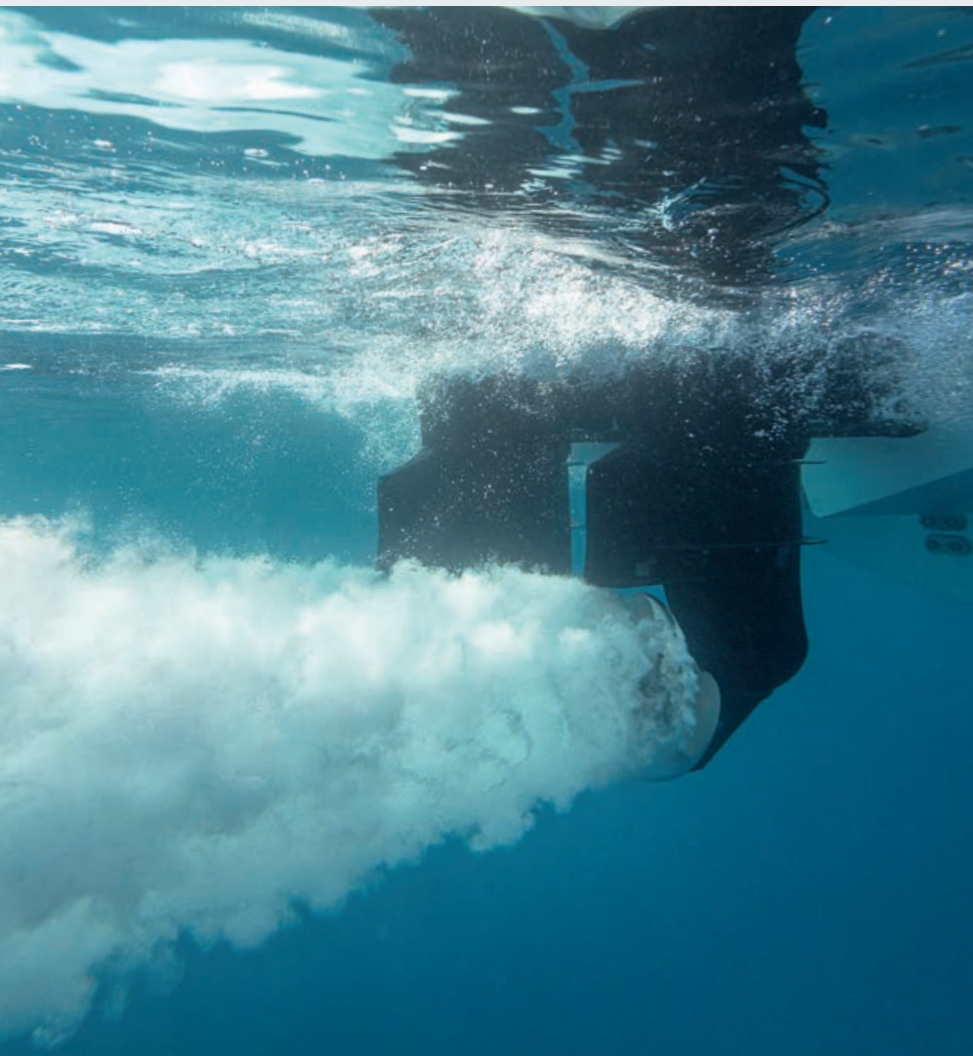
The highly versatile saloon furniture includes an L-shaped sofa with chaise longue function, a twin pilot seat and a co-pilot bench.

LOTS OF AIR AND SUNLIGHT

Saloon and cockpit blend into one charming open space. The electric sunroof and the sliding door at the helm intensify the open feeling.

ENJOY ENDLESS PANORAMIC VIEWS

The matchless glass design creates mesmerising moments. Only Sealine delivers such a grand, spacious view in all directions.



OUT OF THIS WORLD: THE OUTBOARD EXPERIENCE

The C390v creates a magic combination of the sun-drenched Sealine flair and the special allure of the outboard drive. This model is dedicated to those who find a convenient, agile and instantly accelerating engine most suitable to their laid-back lifestyle. Time to enjoy the largest representative of Sealine's V-Series.

TREND-SETTING DESIGN





All Sealine yachts are born of the same values: they feature wide interior spaces, an amazing quantity of natural light and outstanding design with German engineering inside. As for these trademarks, the C390v displays the true spirit of Sealine.



enjoy the
LIGHT

feel the
SPACE

combine functionality with
DESIGN



EXTERIOR DESIGN

DEDICATED TO THE SUN

The sun above. The sea below. And in between, there's just you and your Sealine C390v. The forward sunpad is divided into several elements that can be individually set upright. In this way, you effortlessly create almost any required seating arrangement. If you like to sunbathe in the aft, the cockpit converts into a lounge area, too.



The cockpit area and saloon are connected by a bifold door and tilt-up window. Whatever the weather, this smart invention by Sealine never fails to excite. When both elements are closed, you enjoy stunning panoramic views – or one-level-living on sunny days when they are open. It is a pleasure to serve any need of your crew straight from the pantry, no matter which outdoor area they prefer.



The Sealine C390v combines bathing pleasure with outboard technology. A bathing platform with luxury teak decking can be found on both the starboard and port sides behind the cockpit. Without engines inside, the yacht offers extra space for large items of water sports gear, which you can access from the deck by folding up the cockpit table.

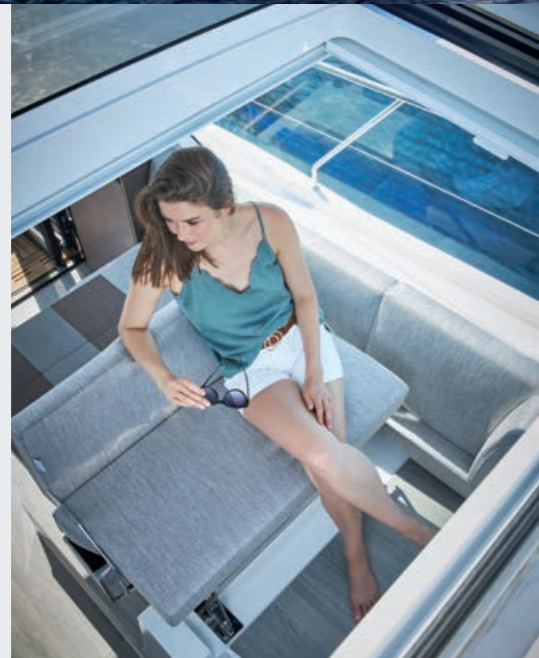


SEALINE C390v



TAKE A SEAT – AND THEN TAKE OFF

At any time, the twin outboards are ready to enrich your life on board with action-packed moments. The Sealine C390v is designed for two high-powered 350 hp duoprop engines which rapidly accelerate the yacht to 32 knots or even more, depending on the load. Outstanding handling characteristics are part of the driving pleasure, too. From hull shape to weight reduction, we have pulled out all the stops to ensure you will experience an exhilarating time at sea.



The helm station is a designer piece in itself, adding a spectacular touch to the space with its gleaming chrome fittings. Thanks to the optional joystick control, docking the 40 feet into a narrow slip is just a simple fingertip operation. When required, the convertible portside bench provides another two co-pilot seats.





INDIVIDUALLY CREATED. IMPECCABLY CRAFTED.

The interior design of the Sealine C390v is a combination of expressive craftsmanship and state-of-the-art precision technology – all strictly according to your style choices. Just one trip will persuade you that this is the ultimate maritime lifestyle.



The saloon of the Sealine C390v exemplifies the idea of the all-weather yacht and represents a luxurious world of its own. The versatile equipment list includes sophisticated extras, such as the extendable chaise longue. With two fridges and a fully-equipped galley, you can satisfy every culinary desire. To best appreciate the interior aesthetics and the 360-degree view, the galley can be concealed under an elegant wooden cover.





Natural light all around – Sealine holds true to this signature trait even below deck. The sunrays set off the exquisite selection of materials in the master cabin. The composition of specially designed fabrics, artfully finished woods and mirrored cabinet doors creates the perfect setting for the king-size island berth.

In the en-suite shower room, the owners enjoy their own wellness area. Here, every element and every material is subordinated to the overall aesthetic concept, set off by soft light.



Three twin cabins and two bathrooms feature highly elegant décor – and space for everyone on board to find their favourite retreat. The VIP bedroom is furnished with a twin berth, wardrobe and sideboard on the port side. Thanks to the impressive hull windows, even the two midship cabins bathe in brilliant daylight. When cruising with a smaller crew, make use of the extra cabin to store additional watersports equipment or as a walk-in closet.

MY SEALINE SAFETY CLOUD



SENSORS

Real-time monitoring of battery levels and devices.



SWITCH CONTROL

Control of lighting and electrical devices (optional).



ALERTS

Notifications for battery, bilge, shore power, anchor, geo fencing and more.



TRIPS

Electronic logbook with archive and share function for social media platforms.



REPORT ISSUE

Direct contact to the dealer.



MAINTENANCE

Push notifications before due dates for maintenance of all components.



SHOP & PARTS

Feature for ordering equipment, supplies and spare parts.



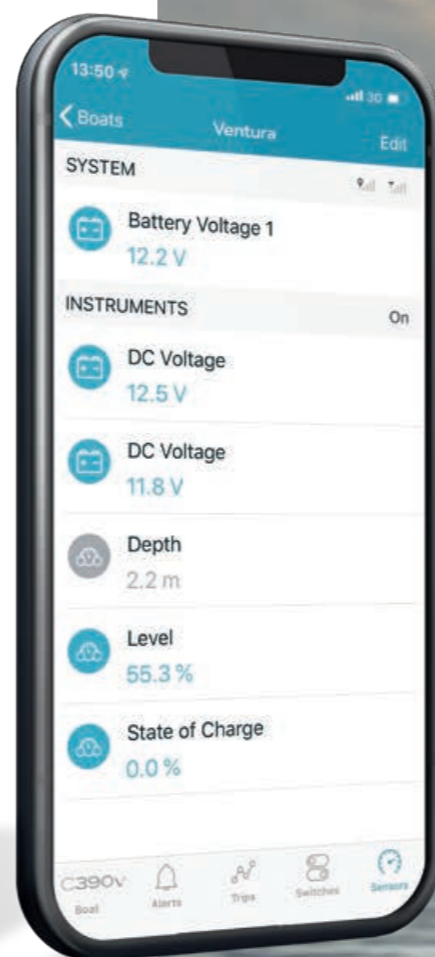
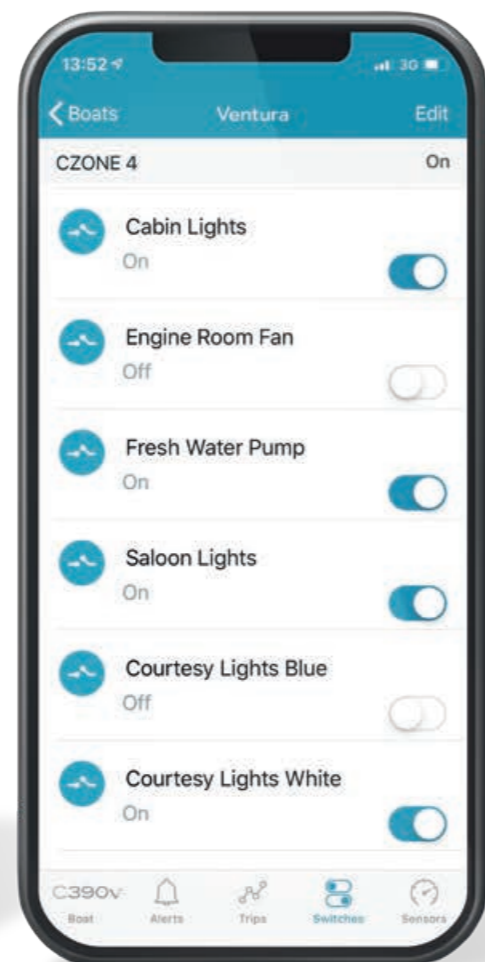
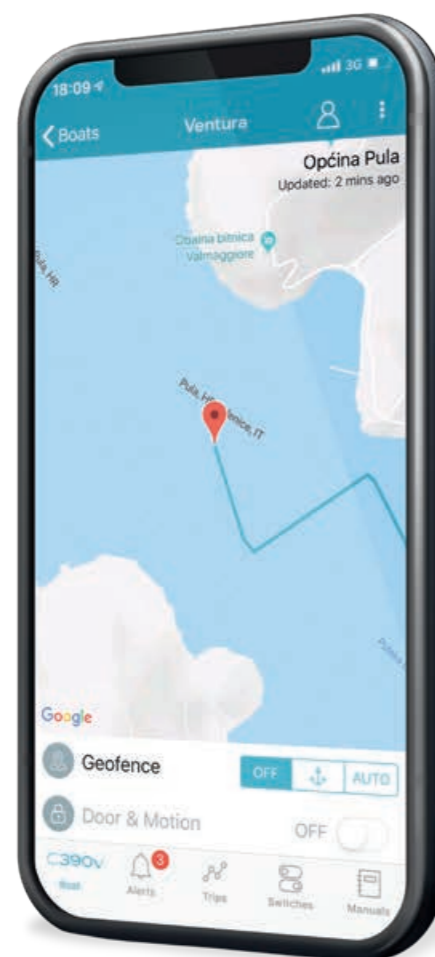
MANUALS

and operating instructions for all units and components on board.



INSURANCE

Exclusive in-app offers and conclusion of all insurances around the boat by Pantaenius.



BE THERE – NO MATTER WHERE YOU ARE:

Everyone is talking about the digital future. But Sealine implements it – with the first cloud-based telematics system for series production motor yachts. You can access your boat's technical data and functions live via the mobile app or via the owner's area at www.sealine.com



DISCOVER MORE DETAILS: WWW.SEALINE.COM/APP

SEALINE C390v



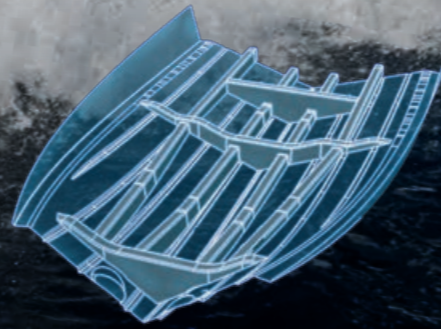
POWERED BY 2 X 350 HP

Suzuki developed the world's first outboard engines that successfully use the counter-rotating propeller technology. Their 350 hp duoprop motors impress with compact size, increased stability and more "grip" underwater.



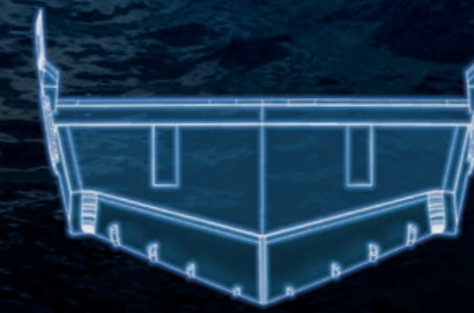
LAMINATED POWER GRID

The hull reinforcements of the Sealine C390v are elaborately laminated – giving you the advantages of a high-strength yacht with a reduced weight.



DEEP V-SHAPE KEEL

The Sealine C390v hull has a deep-V shape. This means the Sealine is exceptionally stable in the water, making for more comfortable boating.



UPRIGHT STEM

The vertical bow with its curved foot pierces the waves elegantly and efficiently. This, in turn, results in more comfort and more boating pleasure.

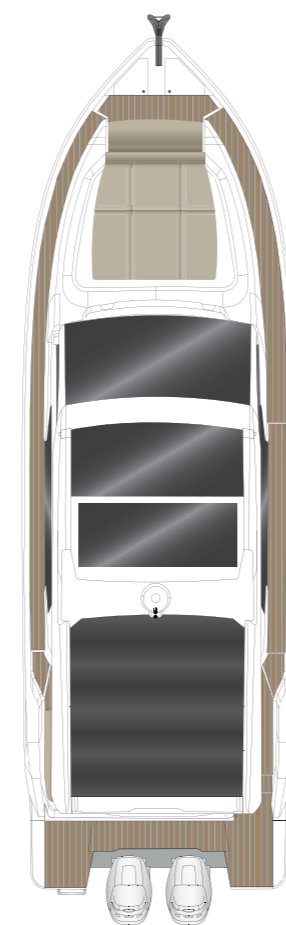


PRINCIPAL DIMENSIONS according to ISO 8666

LOA	12.42 m	40' 9"
LH	11.96 m	39' 3"
Beam	3.85 m	12' 8"
Draught (Tmax)	0.96 m	3' 2"
Height above waterline inc. mast	3.86 m	12' 8"
Height above waterline excl. mast	3.22 m	10' 7"
Fuel capacity	2 x 570 l	2 x 125 gal
Water capacity	400 l	99 gal
Displacement approx.	10.36 t	10.20 UK t
Max. people on board	10	
CE Category	B - 10 / C - 14	

OUTBOARD ENGINES

Required motor configuration	2 x 350 hp
Max. speed	32 kn



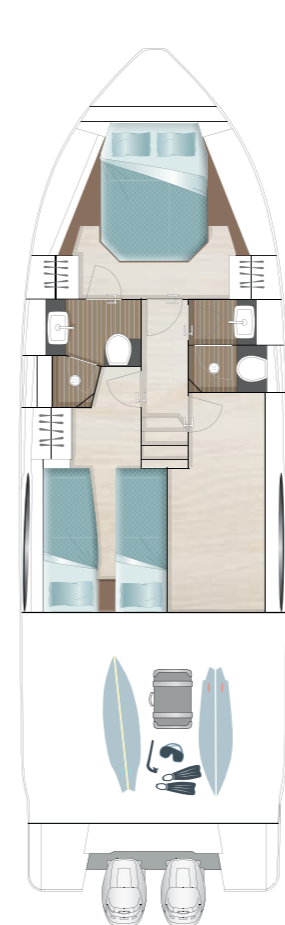
ROOF



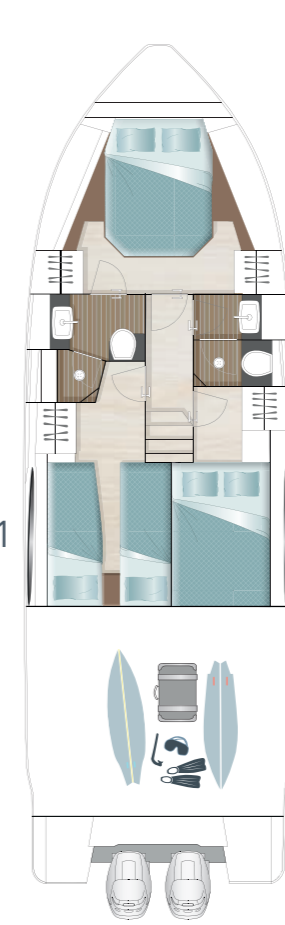
MAIN DECK



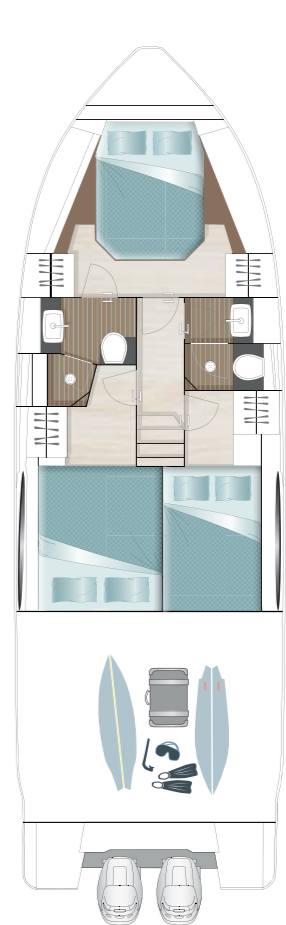
MAIN DECK
option



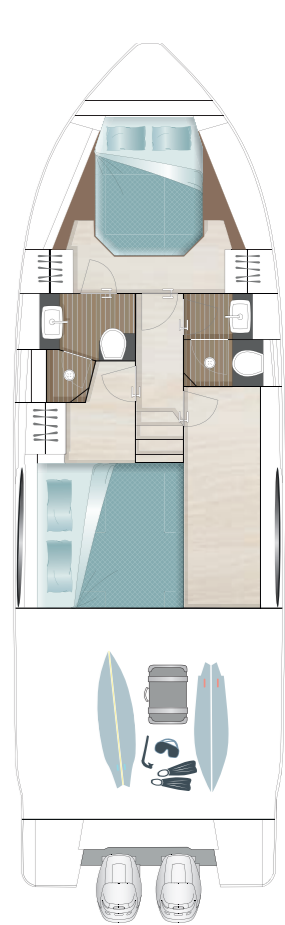
LOWER DECK



LOWER DECK
option



LOWER DECK
option



LOWER DECK
option

*All performance figures are given in good faith and are intended as an indication. These figures cannot be guaranteed, as top speed is affected in particular by the cleanliness of the hull, conditions of the propellers, weight carried and air/sea temperature. Performance is related also to the optional accessories selected. Sealine reserves the right to change specifications in line with the company policy of improvement through research and development. Errors and omissions expected. Please check with your dealer for a full list of inclusions. This brochure is not contractual. The yachts depicted partly comprise special equipment not included in the standard scope of supply. Illustrations may not correspond with current versions. Subject to alterations in design and equipment without notice and errors excepted. Photos: Nico Krauss. Renderings: Alpha3. Print: EGGERSDRUCK. Artwork: smz GmbH



LIMITLESS VARIETY

MATCHLESS QUALITY

The manufacturing quality of the Sealine C390v is a multi-sensory experience. Exquisite materials spoil the eye with every glance. A subtle scent of finest leathers blends with the pleasing feel of elegant woods. Anything you see or touch was masterfully handcrafted by superb boat builders. Enjoy an exclusive atmosphere that can only be created by the perfect match of sophisticated details.



EACH SEALINE IS ONE OF A KIND

With your personal selection of colours and textures, you transform your Sealine into a unique expression. Five teak options are available for the deck alone. We also offer special materials for cockpit seats and sun cushions. For the interior you can choose between different furniture woods, upholstery and curtains, while underfoot, select from wood or carpet.



GERMAN PRECISION AND PASSION FOR THE SEA. THAT'S WHAT A SEALINE IS MADE OF.

In 2013, the Sealine brand found a worthy new home on the German Baltic coast. At our shipyard in Greifswald, we have perfected the interplay between state-of-the-art manufacturing techniques and skilled employees.

The outstanding people in our team perform their work with enormous experience, a deep understanding of the customer and great dedication.

In addition, we are thrilled to cooperate with our British partner Bill Dixon. Working closely with our in-house experts, the award-winning designer is creating a new range of innovative Sealine models.

Above all, we believe that what holds true for the experienced boater, also holds true for us as boat builders. Beyond the individual skill, there is something which genuinely binds all of us at Sealine: A great passion for the sea.



WELCOME ON BOARD

YOUR LOCAL SEALINE DEALER IS LOOKING FORWARD TO YOUR VISIT.



SEALINE C390v

CRUISER SERIES



C330



C390



C430



C530

FLYBRIDGE SERIES



F430



F530

OUTBOARD V-SERIES



S330v



C330v



C390v

SPORT SERIES



S330



S430



www.sealine.com

Sealine Ladebower Chaussee 11 D-17493 Greifswald