

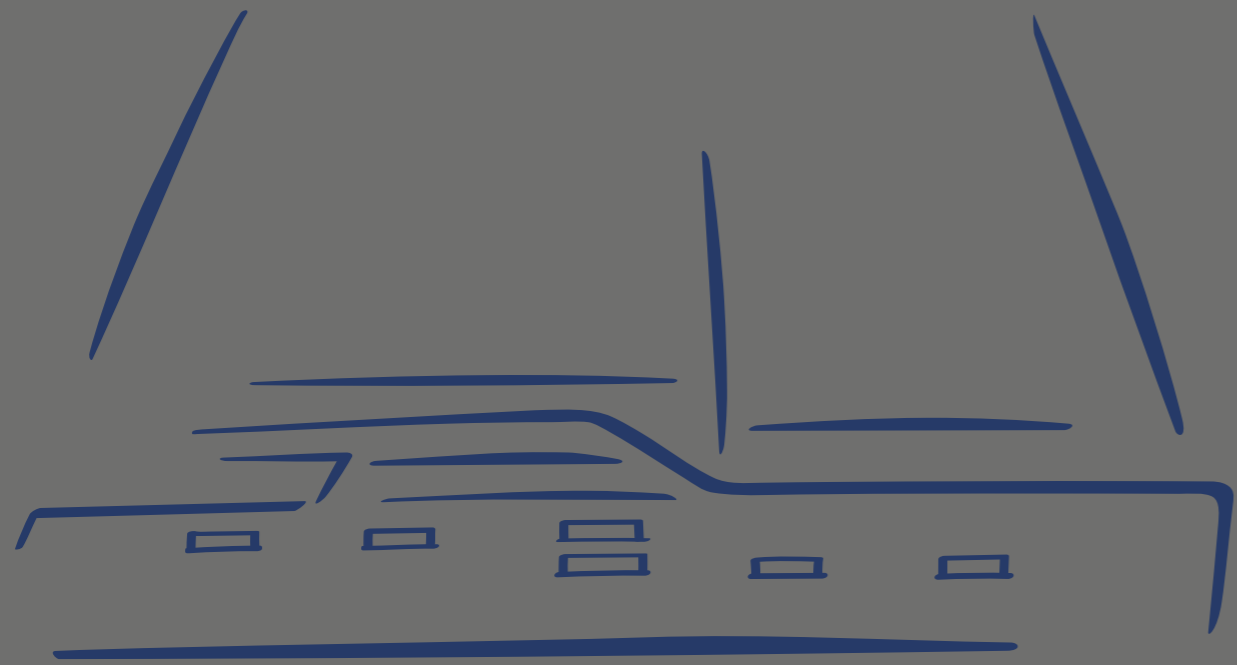


Moody

Decksaloon 54



ONE-level living. TOP-level sailing.



Absolute Moody style

Experience Moody's deck saloon design at its most impressive scale.
The Moody DS54 is a true icon of bluewater sailing: unique in aesthetics,
handling and quality of life.



Even from the dock, the Moody DS54 is in a class of her own. Her engaging design is not simply a tonic for the eyes. Above all, it shows the impressive qualities that are combined in this yacht.

A DESIGN LIKE NO OTHER. FOR SAILORS WHO DREAM BIG.

A slender, elongated bow hints at thrilling dynamics. The broad stern with a flat underwater hull profile promises excellent sailing characteristics. The powerful, raised coaming is a sign of the extremely robust hull. Large steering consoles embody supreme control. No wonder the DS54 captivates passionate sailors. And arouses the desire to set sail immediately.



Twin rudders controlled from a raised helm position. Two independent systems with two gearboxes.



140.6sqm maximum sail area gives the 54-foot yacht enormous performance potential.



Extra-stiff hull with chines to increase buoyancy and stabilise the hull when heeling.

You concentrate entirely on the course. On the trim. Decide how the yacht steers to the wind. The Moody DS54 will provide active support for your decisions.

DISTILLS SAILING DOWN TO PURE PLEASURE: EXCELLENT HANDLING.

The basic specification includes a self-tacking jib and electric in-mast furling. Electric winches trim up to 140 square metres of high-tech sails. Additional electric furlers for the headsails can be installed on request, as can a second forestay.

In this way, only a single crew member can handle the yacht in any situation. With the Moody DS54, you can be certain of excellent sailing comfort – a quality that particularly comes to the fore on long passages.





Setting new standards is a defining trait of the Moody DS54. She also goes above and beyond with the deck lighting: when dusk falls, a sophisticated lighting system perfectly sets off the beauty of the yacht.

THE EVENING: TIME TO CELEBRATE THE AESTHETICS OF THE MOODY DS54.

There's underwater lighting in the colour of your choice as well as the LED downlights in the roof struts, completely illuminating the cockpit. Even the side decks are lit along their entire length, creating atmosphere and ensuring safety.



Elegant deck lighting
Striking lighting in the cockpit, along the side decks and underwater.



Sports wheel with Y-spokes choice of white or black finish.

Watch exterior gallery [here](#)

Life is big

Freedom is the key to a great lifestyle.
The Moody DS54 offers this free space – and enhances
it with numerous luxurious details.



Set a course for the most beautiful berths to be found on the seven seas. The outstanding handling of the Moody DS54 extends to mooring and anchoring.

RELAXED ANCHORING: PERFECT FOR IDYLIC MOORINGS. A fold-down bow-thruster comes as standard. Combined with the optional stern-thruster, the yacht can be practically turned on the spot using no more than a joystick. The anchor is on an electric windlass, controlled by a foot pedal or a hand-held remote.

Once you have reached the perfect anchorage, the impressive open deck spaces invite you to relax. Decks are generously laid with teak, including the side decks, the cockpit sole, the benches and the bathing platform.



Electric anchor windlass
controlled by hand-held remote.

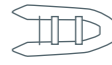


766 litre freshwater tank
The extra-large tankage enables you to stay at sea for longer.





Warm water cockpit shower and convenient bathing ladder.



Dinghy garage for tender & toys also accessible from the deck.



Spacious, smartly divided sunpad with adjustable headrest.



Safe walk-around decks with high bulwarks and robust stainless-steel guardrail.

It is in the smallest of carefully considered details that you find the secret to a carefree lifestyle. Take the cockpit table. It is mounted to one side, so the way to the bathing platform is clear. When folded

IMAGINATIVELY
EQUIPPED.
INTELLIGENTLY
THOUGHT
THROUGH.

out, the table surface doubles and can be reached from every seat. Lowered to the right height, it merges with the benches to form a large sun lounger. The helm seats are also uniquely

versatile: Reversible backrests transform them into a comfortable spot from which to watch harbours and anchorages.

Key elements were also designed with a special ergonomic feel. These include the steering positions, which put all controls within easy reach. But it also applies to the safety features on deck. The stout guardrail runs along the outside of the wide sidedecks, while there's a handrail on the coachroof.



See the
Moody DS54
on video
[here](#)



Experience
360° tour
[here](#)

Living on one level

Cockpit and saloon, seamlessly connected. Moody brought a new sense of space to the world of bluewater sailing with this idea. On the Moody DS54, the concept means the ultimate experience of freedom at deck level.



360-degree panoramic views from every point in the saloon.



20sqm first-class living space above the water.



Hidden ventilation system defogs the front window.

Watch interior gallery [here](#)



EXCLUSIVE INTERIOR MEETS THE OUTDOOR LIFESTYLE.

It's just a flick of the wrist – but a magical one: opening the sliding door between saloon and cockpit creates a huge, connected space on deck. Wherever you are sitting or standing, you will enjoy three things: sunlight, a view of the horizon and plenty of room.

As Moody's largest deck saloon yacht, the DS54 takes the concept of one-level living to the extreme. The spacious deck saloon combines the comfort of the interior with the outdoor lifestyle.

It's not just the panoramic windows. Through the glass panels in the deckhouse roof, you can see the rig – and the sky above. A hidden ventilation system prevents the windows from fogging up, so that nothing can spoil the view.

Opening roof hatches and skylights guarantee excellent air circulation in the saloon. Insulating safety glass helps to create the perfect environment inside. Of course, Moody can also equip your deck saloon with heating or air conditioning.

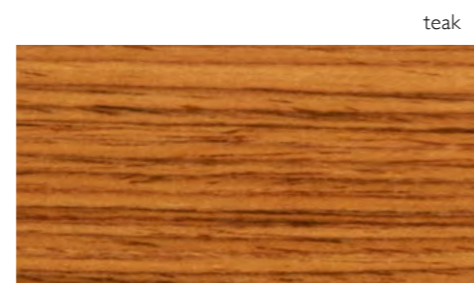
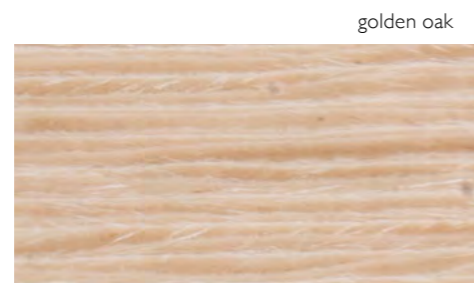
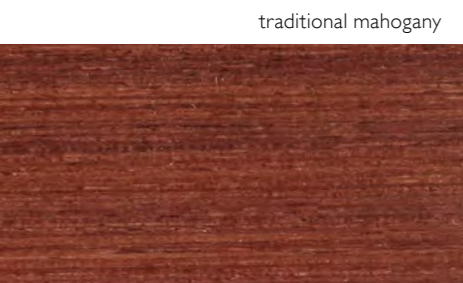


Stylishly coordinated colours and materials lend the deck saloon its character. The carefully thought-out furnishings give it supreme comfort.

The heart of the saloon is the semi-circular seating area. Depending on the occasion and the number of people, the dining table can be reduced in size or moved to one side. Now there's a perfect view of the retractable TV screen.

PANORAMIC VIEWS, FINE CUISINE, ENTERTAINMENT: THE DECK SALOON. In the navigator's seat with charttable, autopilot, plotter and throttle to hand, you can helm the Moody DS54 comfortably from inside – during a long leg under sail or when motoring.

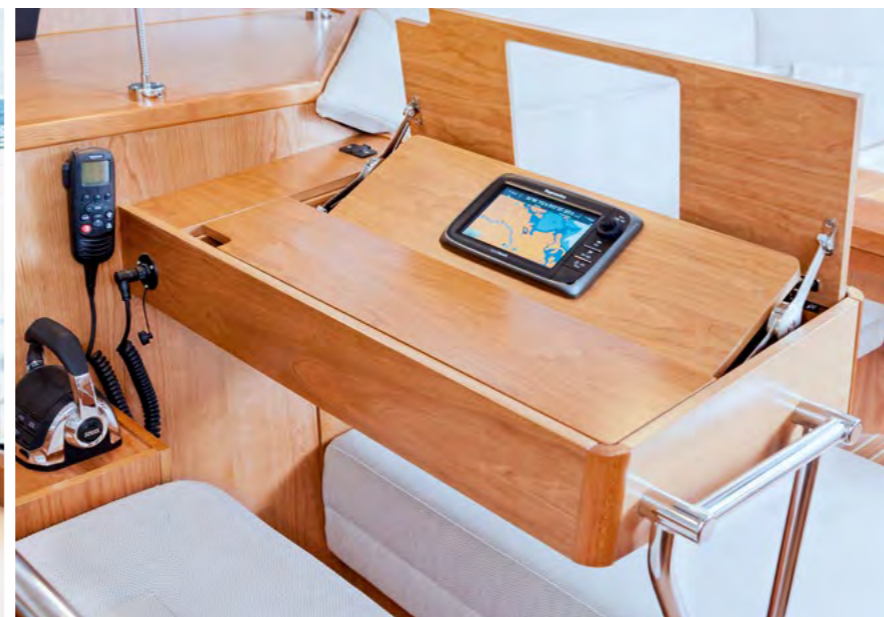
The galley allows for varied and sophisticated cooking at sea. The basic equipment starts with hobs, oven and refrigerator. But there are almost no limits to the extras: a second refrigerator, microwave and dishwasher can easily be added. Moody can also install an ice-maker or espresso machine as desired.





More living space

Put the galley below deck



If desired, the galley can be installed below deck in the place of the starboard cabin. Storage space and comfort is just as extensive as the standard version. Putting the galley down turns the deck saloon into a huge living space with an additional U-shaped seating area.

The open transition between saloon and galley below creates an impressive sense of space over two levels. Even in this version, the Moody DS54 still accommodates up to six in three cabins. The deck saloon offers the entire crew a luxurious living room – and there is still room for guests.



Two large lounging areas in the saloon.



Each floor has its fridge. There is a 140lt fridge in the galley and a wine cooler in the saloon.


Luxury accelerated

Specifications are more than abstract numbers on the Moody DS54. They impressively reveal just how much sailing passion and cruising comfort can be found in a 54-foot yacht.

Download specifications [here](#)



LOA	17.10m	56'10"	Fresh water	766lt	202gal
LWL	15.55m	51'00"	Fuel tank	522lt	138gal
Beam	5.19m	17'00"	CE Certificate	A - 12	
Draft	medium		Mast length above WL	25.22m	82'90"
	2.60m	8'60" (standard)	Main	80.10m ²	862sq ft
	shallow		Jib	60.50m ²	651sq ft
Displacement	2.34m	7'80" (option)	Genoa	02.00m ²	098sq ft
	medium		Genaker	220.80m ²	2,377sq ft
	24.70t	54,454lbs	Total sail area	140.60m ²	1,513sq ft
Ballast	shallow		Design	Dixon Yacht Design	
	24.90t	4,895lbs			
Engine	6.38t 14,059lbs				
	Diesel 110kW / 150HP				

A photograph of a luxurious yacht cabin. The room features a large bed with a grey quilted mattress and a dark grey blanket. The bed is set against a wooden headboard with two white pillows. On the bed, there is an open magazine and a pair of sunglasses. The cabin is finished with light-colored wood paneling on the walls and ceiling. There are several skylights on the ceiling, providing natural light. The room is well-lit with recessed lighting and two bedside lamps. A small vase with white flowers sits on a wooden surface to the right of the bed. The overall atmosphere is warm and elegant.

Home, suite home

A day of luxury on a Moody yacht lasts the full 24 hours. Time spent below deck is every bit as refined as that spent on deck during the day.

It is always a fresh pleasure to enter the exclusive owner's area, consisting of the bow cabin and ensuite bathroom. The first thing that catches the eye is the harmonious light: a long glass panel overhead, portholes, hull windows and opening deck hatches let in plenty of natural light. What's more, there are reading lamps, downlights and indirect lighting.

A MASTERPIECE BY MOODY: THE OWNER'S SUITE. A second glance is rewarded by the exquisite detailing. Leather-covered backrests at the headboard of the king-size bed. The TV and desk ensemble elegantly integrated into the cabin furniture. The ceiling upholstered with satin fabric.

Like everything else on the Moody DS54, the stowage is designed to meet the demands of ambitious long-distance cruising. Overhead lockers run all round the bed and there are two illuminated wardrobes. It adds up to an enormous amount of space, which Moody's interior architects have stylishly presented.



Large island double berth framed by two hull windows, two windows in the coachroof and two skylights.



Ensuite bathroom with separate shower cubicle and illuminated cabinet.



VIP cabin with ample storage space, including two wardrobes and under-bed drawers.



Two comfortable double cabins with natural light and extraordinary headroom outside the berths.



Fully equipped guest bathroom with shower, WC and washbasin. Shower with fold-out partition.



1.



2.



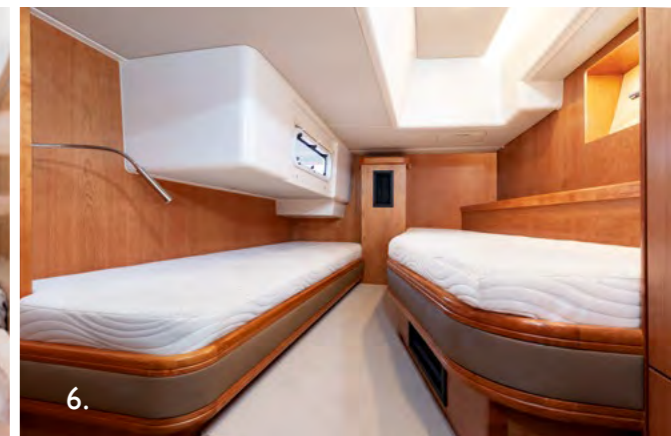
3.



4.



5.



6.

- 1. VIP cabin with queen-size bed positioned crosswise.
- 2. VIP cabin with queensize bed positioned lengthwise.
- 3. VIP cabin has direct access to the guest bathroom.

- 4. Bathroom for VIP and guest cabin.
- 5. Guest cabin to starboard.
- 6. Guest cabin aft.



In the galley-up layout, the Moody DS54 has three double cabins in addition to the owner's suite. Here, too, the mahogany, teak or golden oak furniture create a warm, harmonious atmosphere. As an alternative to the wooden floors, fine carpets can enrich the finish.

THREE EXCLUSIVELY FURNISHED CABINS FOR YOUR GUESTS.

The VIP cabin amidships gets extra light through the double hull windows and the porthole in the coachroof. The queensize bed can be positioned fore-and-aft or crossways. With its own companionway and third bathroom, the aft cabin has been designed so that it can also serve as the skipper's quarters.

Galley up

Galley down

Choose

your cabin concept

Download
cabin concepts
[here](#)

MAIN DECK WITH
GALLEY UP **D1**

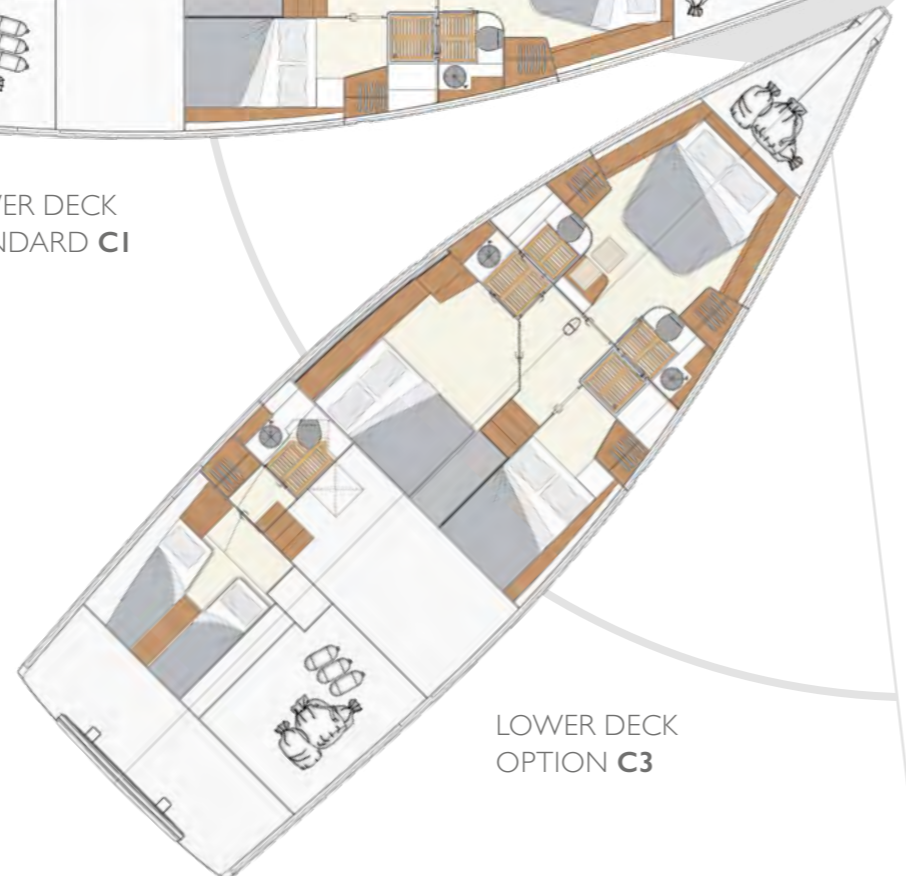
MAIN DECK WITH
GALLEY DOWN **D2**



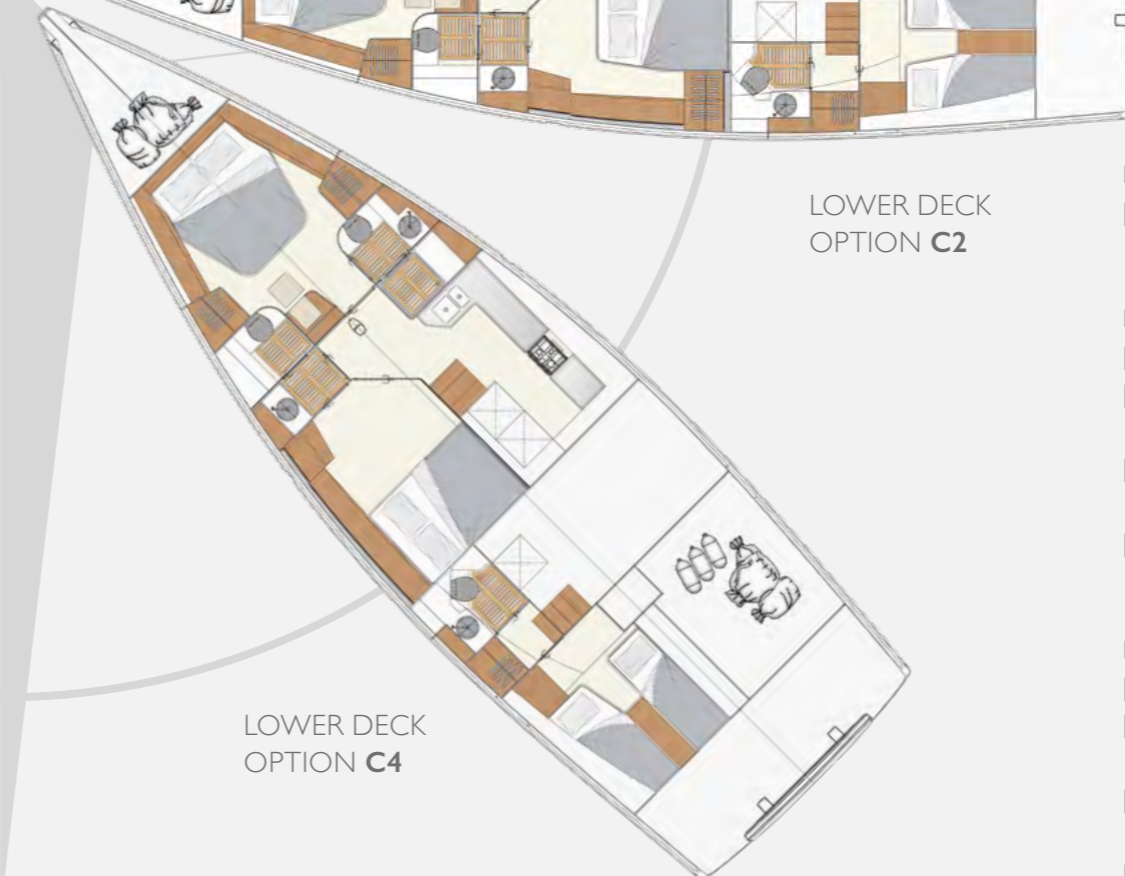
LOWER DECK
STANDARD **C1**



LOWER DECK
OPTION **C2**



LOWER DECK
OPTION **C3**



LOWER DECK
OPTION **C4**

Main deck D1
| Large galley can be equipped with all technical extras.
| U-shaped seating area with 360° panoramic views.

Lower deck C1
| 4 double cabins.
| Luxurious owner's suite with island bed and ensuite bathroom.
| VIP cabin with queensize bed positioned lengthwise.

Lower deck C3
| 4 double cabins.
| Luxurious owner's suite with island bed and ensuite bathroom.
| VIP cabin with queensize bed positioned crossways.

Main deck D2
| Two large seating areas with all-round view incl. table.

Lower deck C2
| 3 double cabins.
| Large galley can be equipped with all technical extras.
| Luxurious owner's suite with island bed and ensuite bathroom.
| VIP cabin with queensize bed positioned lengthwise.

Lower deck C4
| 3 double cabins.
| Large galley can be equipped with all technical extras.
| Luxurious owner's suite with island bed and ensuite bathroom.
| VIP cabin with queensize bed positioned crosswise.

Moody custom collection

Combine exquisite materials with elegant colours. Determine the sailing characteristics from the sailcloth to the keel. Configure your on-board technology, including the engine, sound system and navigation instruments.

Configure
your yacht
[here](#)

Hull colours

Your taste is what matters

Just consider the colours below as an initial inspiration. The hull and waterline of your Moody Yacht can be painted in almost any colour from the ALEXSEAL Yacht Coatings selection. Please ask your dealer.

hull & waterline / painted colours

whisper grey

moon dust

cloud white

cloud white

cloud white

flag blue

moon dust

whisper grey

hull & waterline / gelcoat colours

off white RAL 9003 – standard

caribbean grey RAL 7040

hazelnut metallic

midnight grey metallic

Moody grey RAL 7034 – standard

classic dark blue RAL 5004

flag blue

cloud white

off white RAL 9003 – standard

caribbean grey RAL 7040

sunfast red

whisper grey

lago grey RAL 7043

off white RAL 9003

whisper grey

sunfast red

light grey RAL 7047

light grey RAL 7047

off white RAL 9003

caribbean grey RAL 7040

Download
all colours
& materials
[here](#)

Finest fabrics

Create your individual home

Moody customises the interior to match all your wishes. Immerse yourself in our versatile world of premium fabrics, carpets and textures.

Your dealer will be pleased to show you the entire palette.

carpets



oyster pearl



diamond white



royal taupe



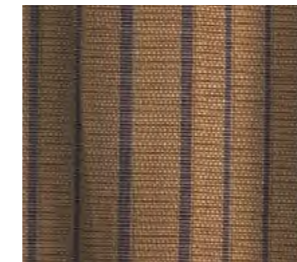
queen's umber

curtains

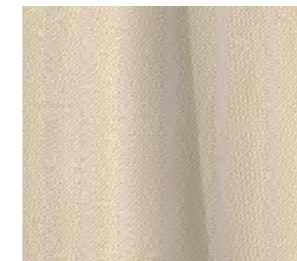
Elvis



white



gold



cream



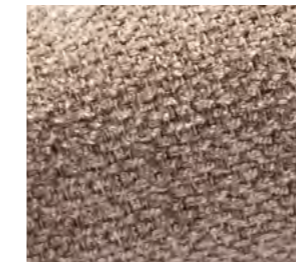
red

saloon, sofa & navigator's seat upholstery

Oxford



cream - standard



taupe



silver

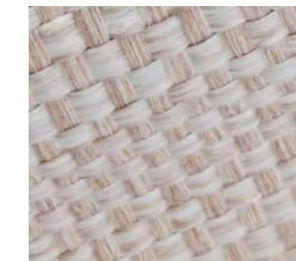


stone

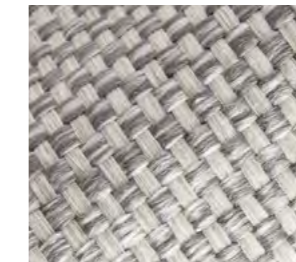


denim

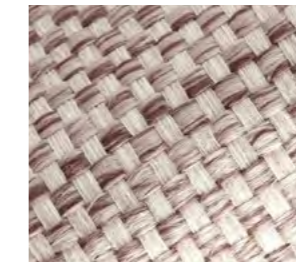
Devon



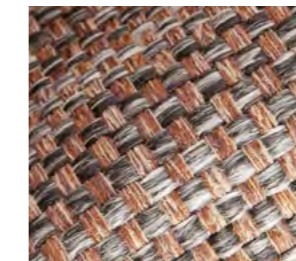
cliffside - standard



glacier



oyster

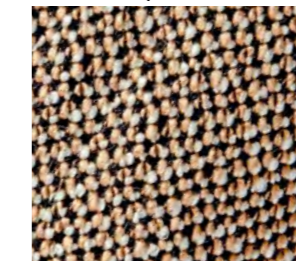


muscat

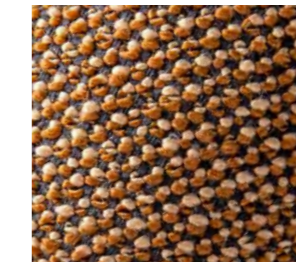


graphite

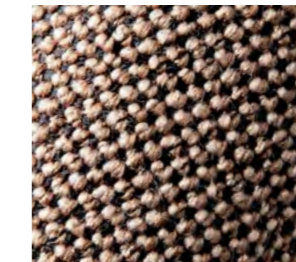
Orkney



almond



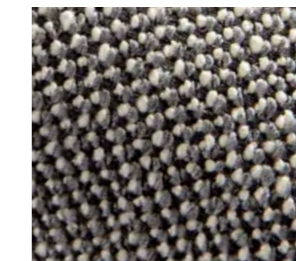
bronze



rock island

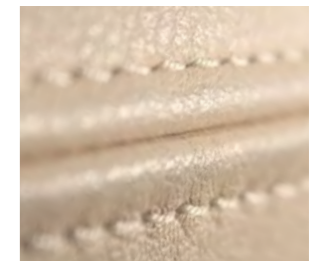


black truffle

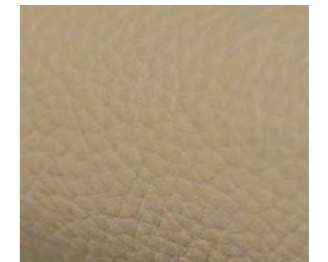


husky

Yorkshire leather



ivory



clay



dark mud



basalt



dark brown

cockpit & sunbed cushions

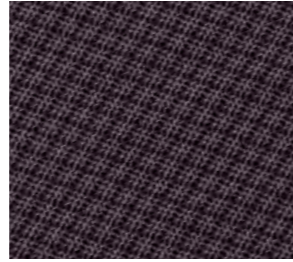
Diamante



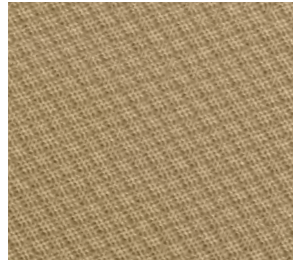
snow



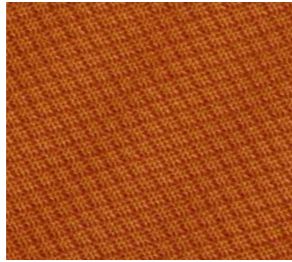
regatta



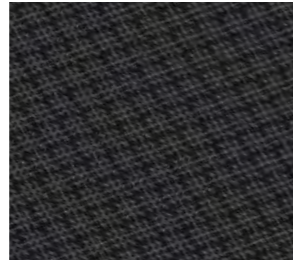
grapey



taupe

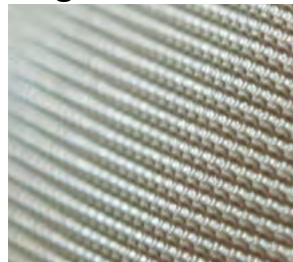


sunset

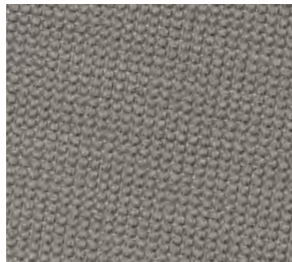


carbon

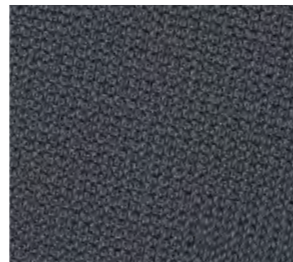
Vogue



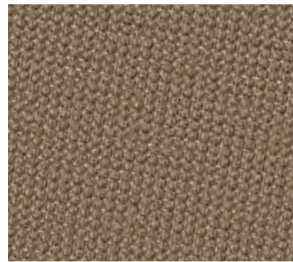
eucalyptus



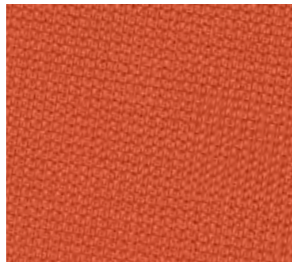
earth



nickel



mushroom



apricot



denim

steering wheel cover & bimini



cream

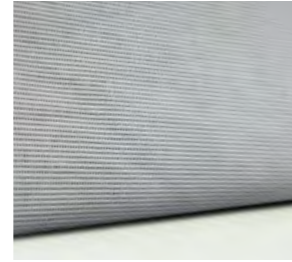


light grey

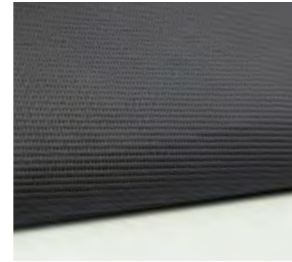


dark grey

windscreen covers



grey



black

Exterior upholstery

Style it your way

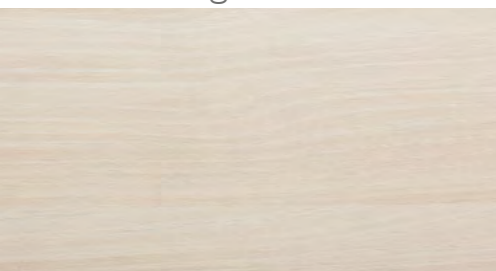
Design your Moody DS54 to be a masterpiece of personal expression. For instance, you can choose upholstery for the cockpit and sun lounger whose colour is in perfect harmony with the hull – or opt to create a striking contrast.



Selected woods

Luxurious look for interior and exterior

interior
flooring woods



new zealand acacia – standard

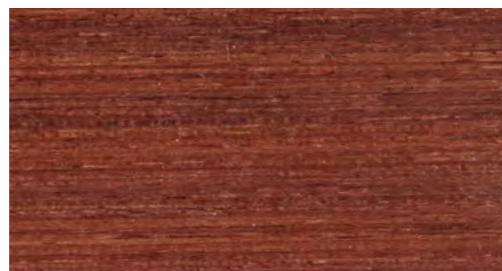


continental oak



traditional stripes

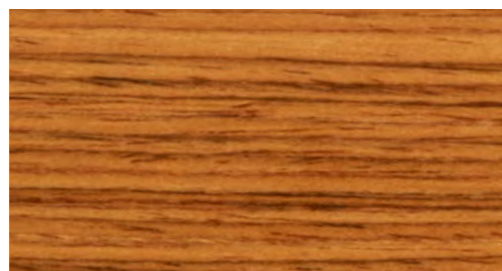
interior
furniture woods



traditional mahogany – satin varnish – standard



golden oak



teak

exterior
woods



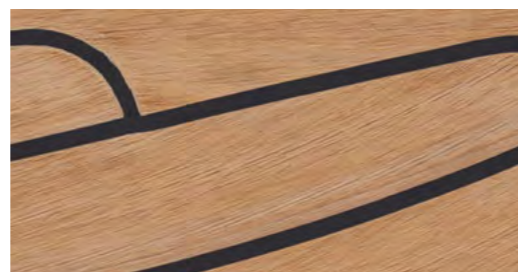
scrubbed white



scrubbed grey

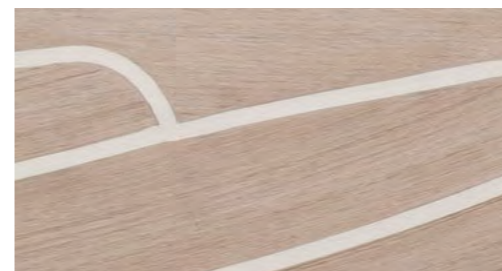


teak grey

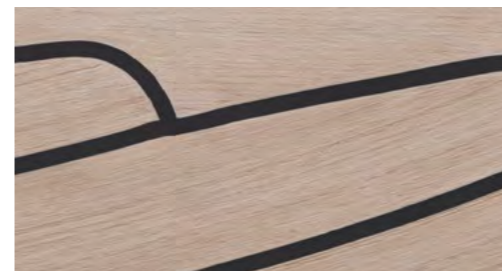


teak black

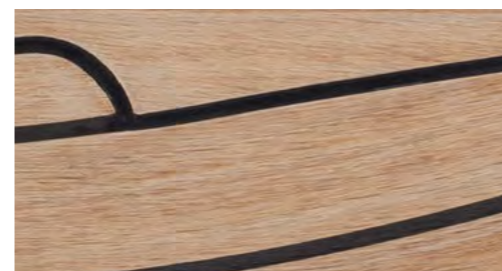
Moody is genuine quality with no compromise. Only premium woods are handcrafted into the elegant surfaces. Thrill to the look and touch of these surfaces. You can feel the difference every time you walk barefoot on the teak deck or slide your hand over our finely crafted joinery.



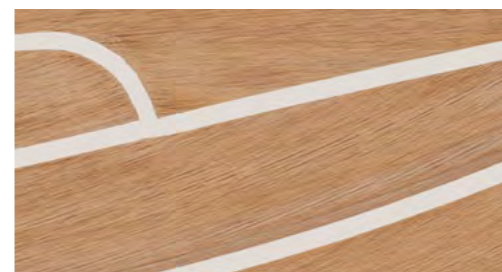
wheathered white



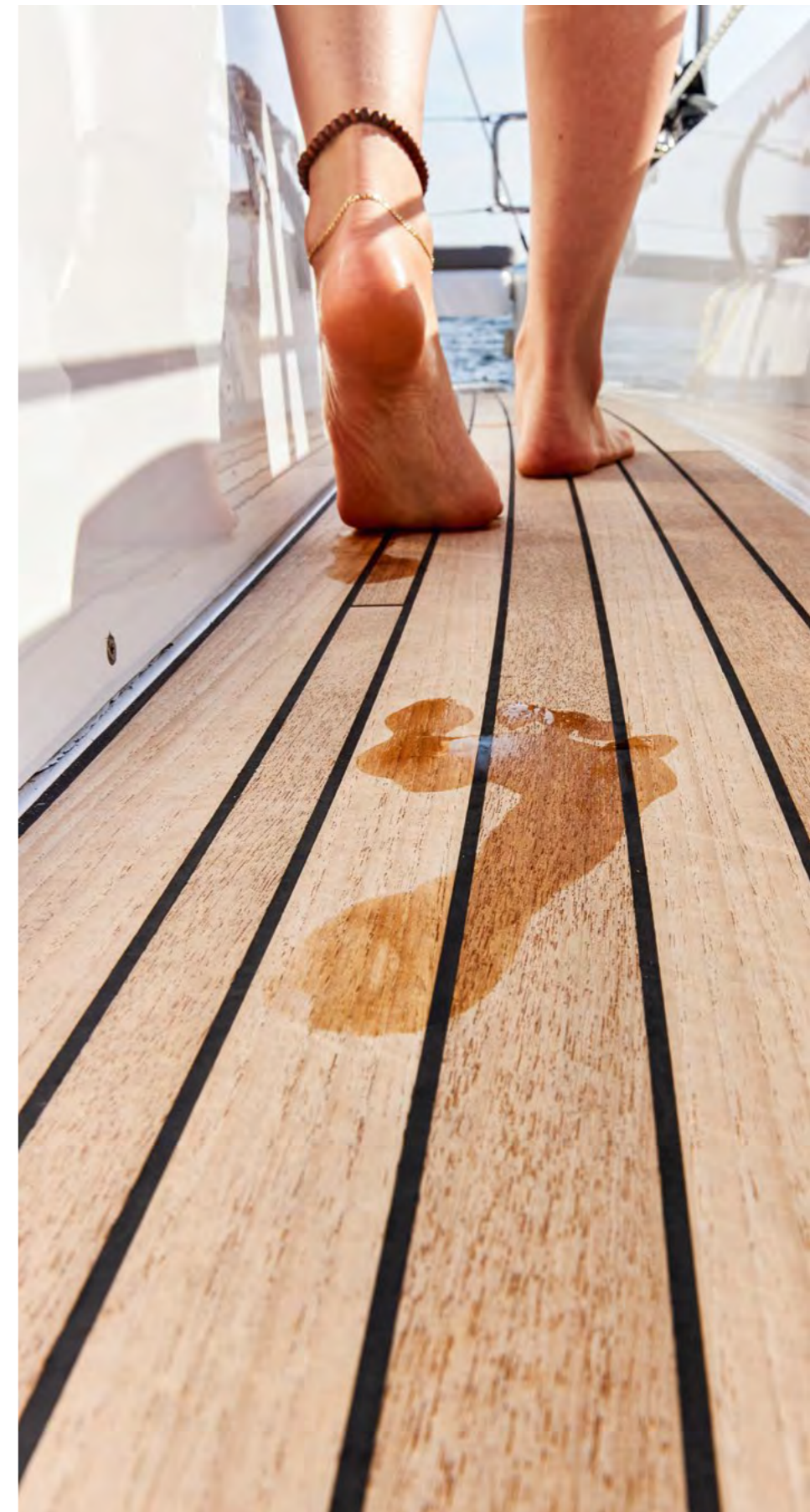
wheathered black



scrubbed black

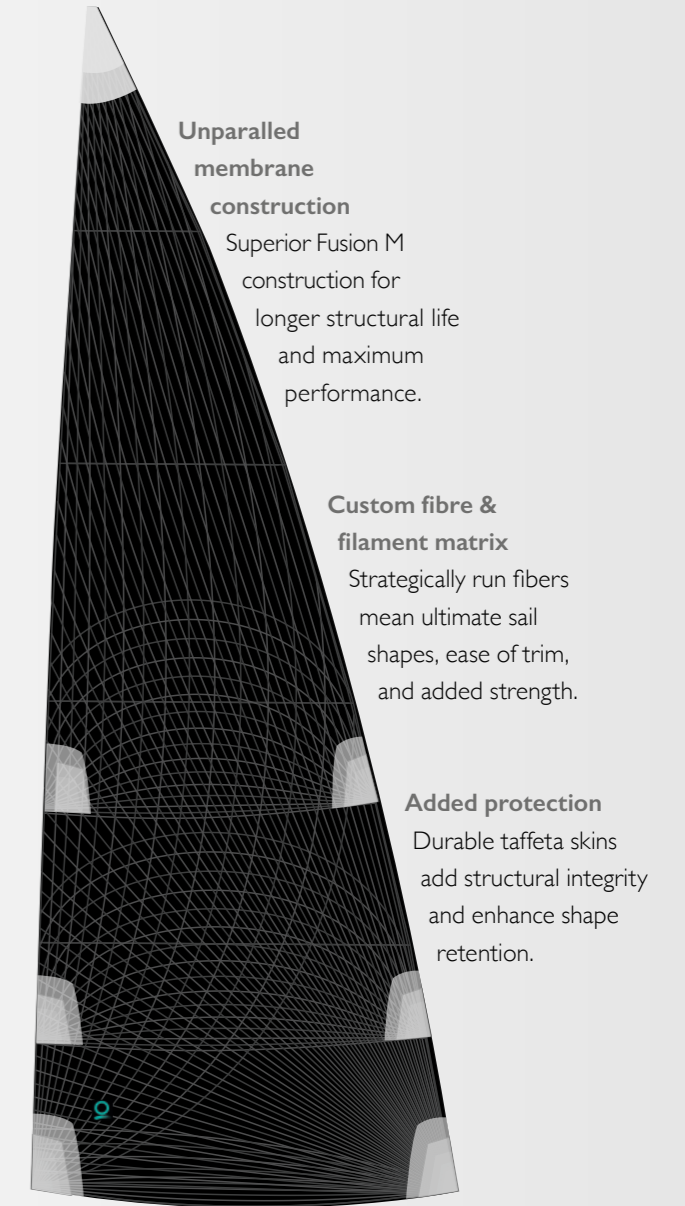
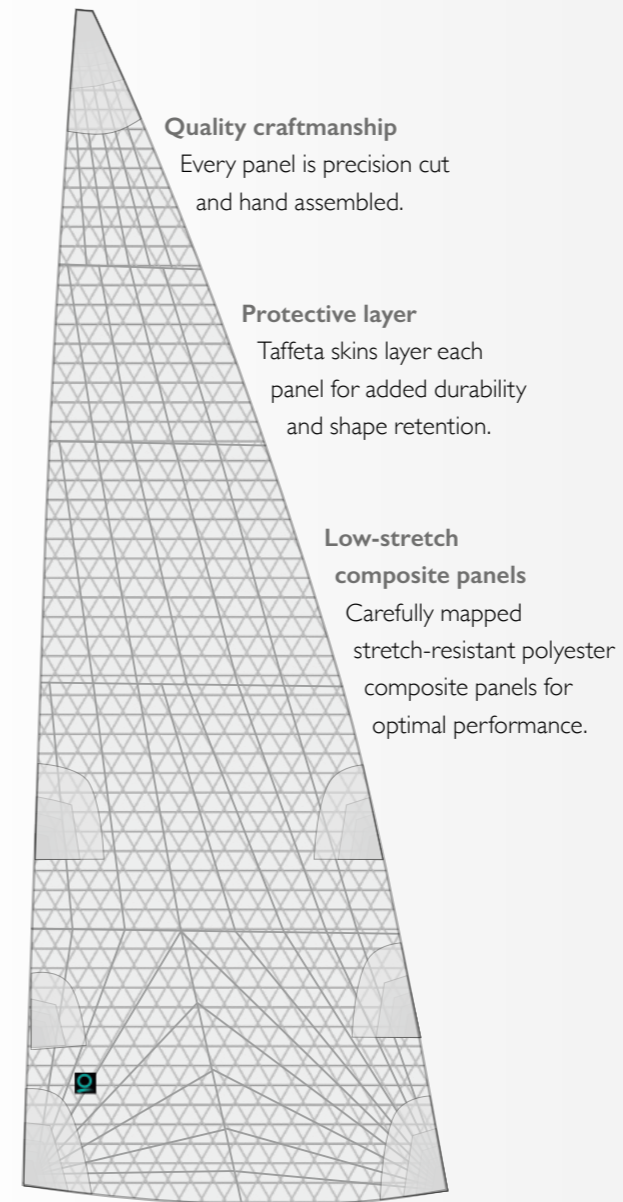
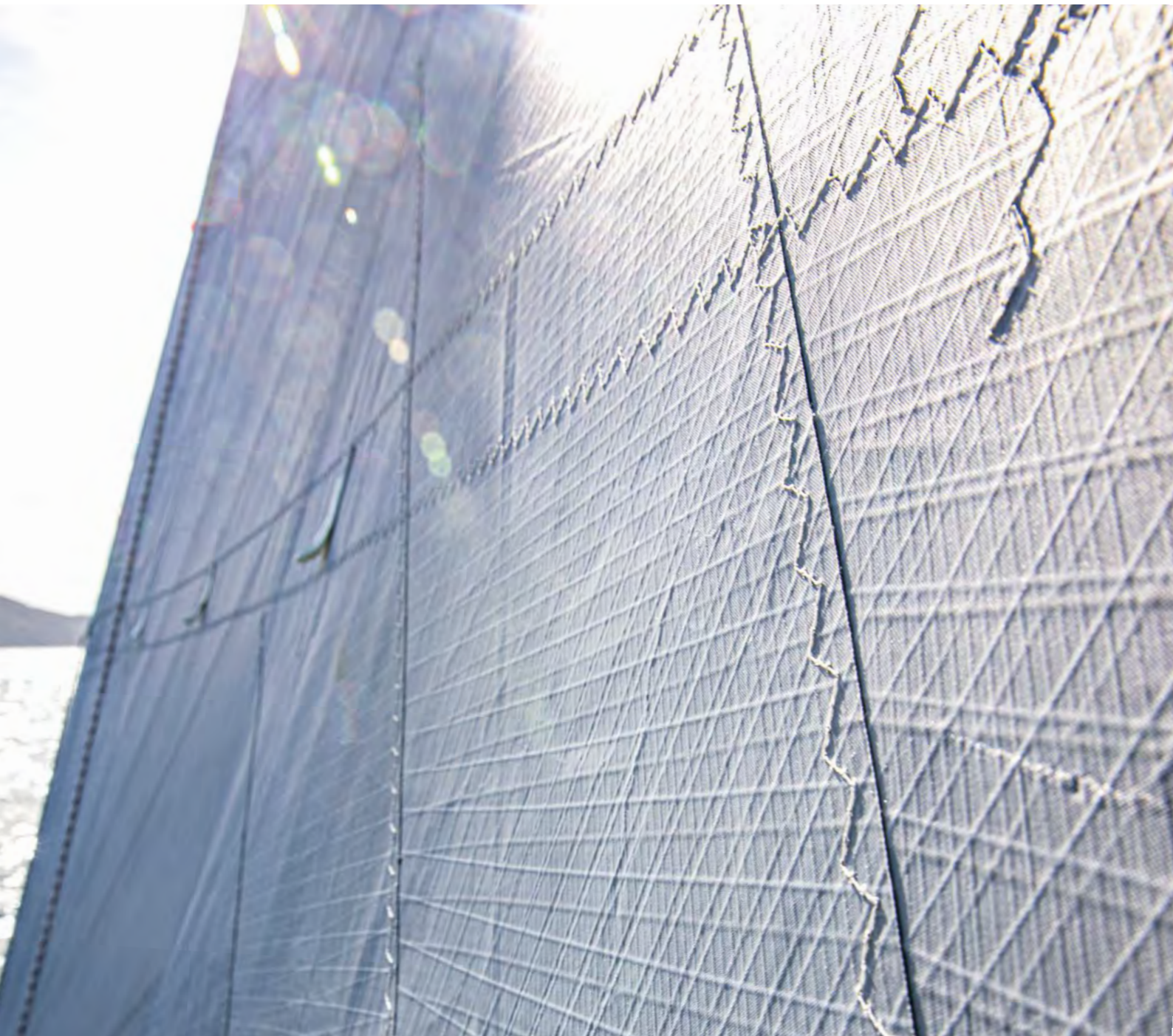


teak white



Concept sails

By Quantum for Moody Yachts

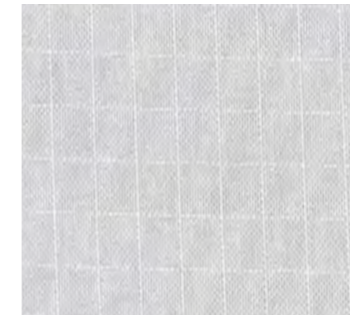
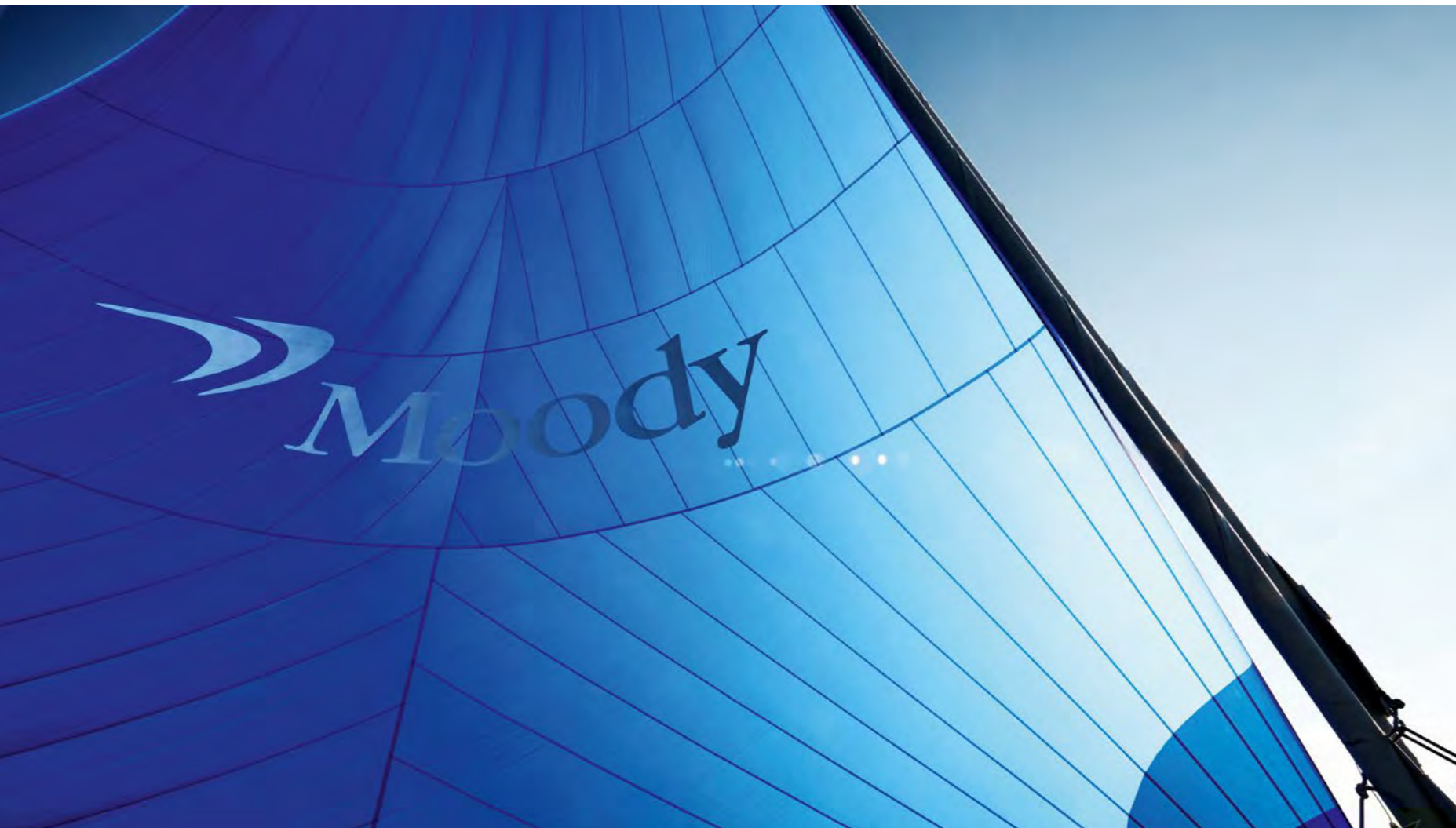


Fueled by the best sailors, sailmakers and designers in the world and comprehensive data and insights from every project they've worked on – from superyachts to dinghies – Quantum developed their latest high-tech products for Moody yachts. The result is a custom sail engineered to achieve the perfect shapes that, simply put, give you confidence through control and ease of use.

Gennaker look

Colour your life

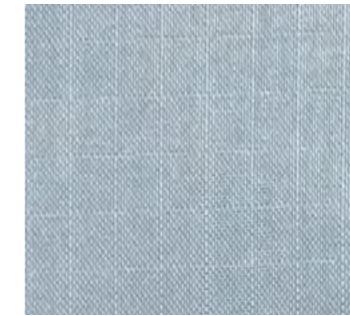
Increase your sailing performance and send a colourful signal at the same time.
Our selection of gennakers ranges from discreet to very eye-catching hues.



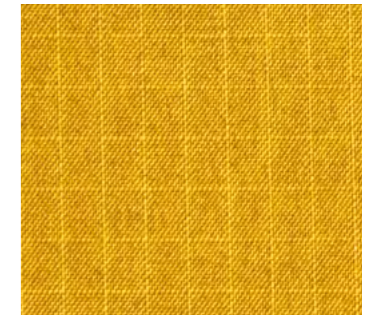
natural



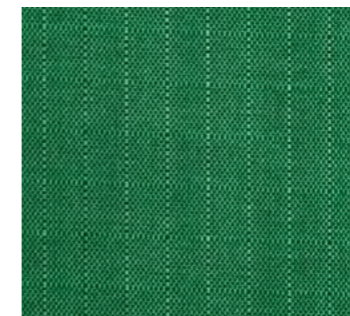
grey



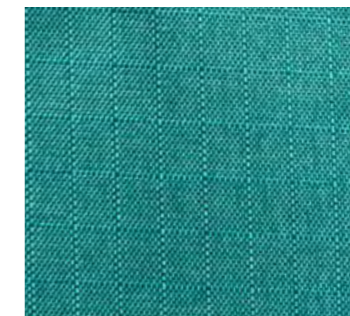
light blue



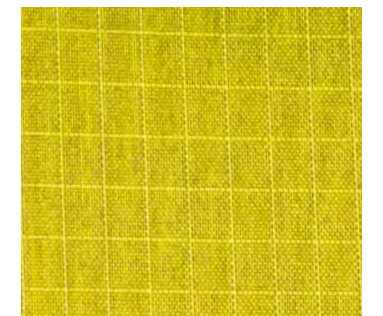
coast gold



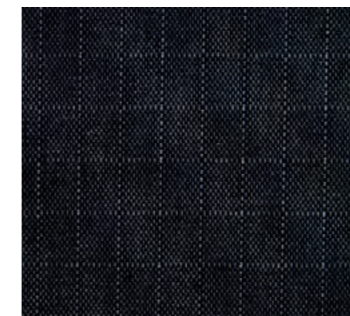
green



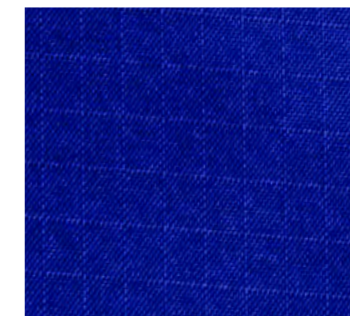
ocean blue



yellow



black



dark blue



orange



purple



navy



red

Moody Connect

Be smart, be intelligent and up to date

Everyone is talking about the digital future. But Moody is implementing it – with the first cloud-based telematics system for series production sailing yachts. You can access your boat's technical data and functions live via the mobile app or via the owner's area at www.moodyboats.com. Intelligent functions such as BoatMonitoring, eLogbook and eServicebook enable you to keep an automatic logbook, stay on top of all servicing dates and monitor your yacht seamlessly.

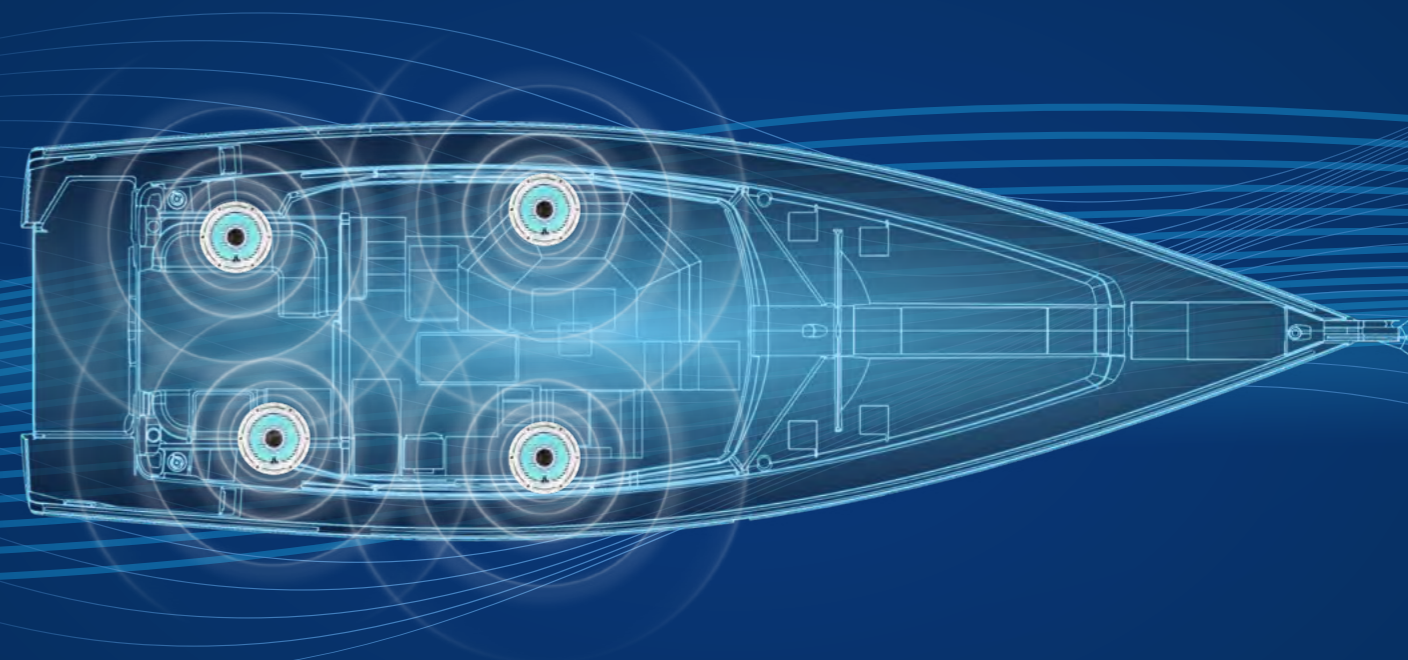


-  **Sensors**
Real-time monitoring of battery levels and devices.
-  **Switch Control**
Control of lighting and electrical devices (optional).
-  **Alerts**
Notifications for battery, bilge, shore power, anchor, geo fencing and more.
-  **Trips**
Electronic logbook with archive and share function for social media platforms.
-  **Report Issue**
Direct contact to the dealer.
-  **Maintenance**
Push notifications before due dates for maintenance of all components.
-  **Shop & Parts**
Feature for ordering equipment, supplies and spare parts.
-  **Manuals**
and operating instructions for all units and components on board.
-  **Insurance**
Exclusive in-app offers and conclusion of all insurances around the boat by Pantaenius.

MyMoody Sound Theatre

High-end sound meets high-class living

Your first impression: brilliance. Even the finest acoustic nuances are brought out. Two pairs of loudspeakers – one in the cockpit, one in the saloon – overwhelm your ears with their outstanding clarity. Simplicity is the second thing you'll notice. We've brought the design and operation of the system back to the essentials, for intuitive control via the chart plotter or the separate control head. And thirdly, you'll enjoy the thrill of cutting-edge technology. The system is wireless, very compact and almost limitlessly flexible. This is the connectivity of the future.



JL Entertainment Package:

Remote
JL Audio MMR-40

Audio Head Unit
JL Audio MM 50 BE
with bluetooth

Control via
B&G Zeus³ 7"
chart plotter

Speakers
2 x 2 JL Audio
speakers



MyMoody Safety Cloud

The MyMoody Safety Cloud enables real-time monitoring of your Moody: anytime, anywhere, simply via the app. Protect your precious yacht remotely, as if you lived on board. You can organise maintenance and service with unprecedented ease. Thanks to the electronic logbook, a smartphone is all you need to share your sailing experiences with others. In short: this system will add a whole new dimension to your sailing passion.*

* The range of functions depends on the selected equipment. Please ask your dealer.

[Follow us](#)

Welcome on board

The second you first set foot on board, the Moody DS54 reveals her charm. Contact your dealer to experience this moment yourself.





 **Moody**